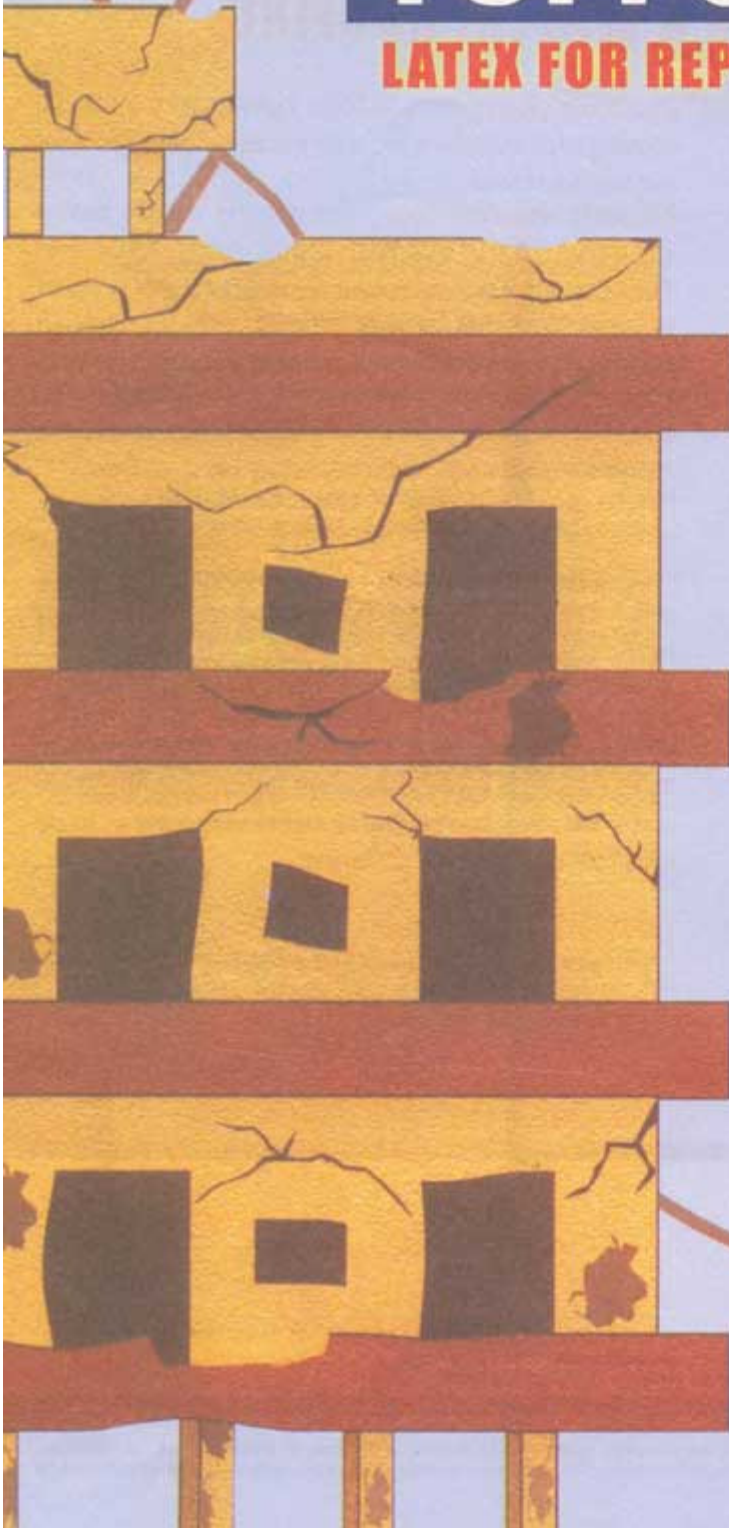


WEATHERTUFF[®]

TUFFCRETE-SBR

LATEX FOR REPAIRS & WATERPROOFING



WEATHERTUFF®

TUFFCRETE-SBR

LATEX FOR REPAIRS & WATERPROOFING

TUFFCRETE-SBR is a Styrene Butadiene based liquid useful as an additive for concrete / mortars in waterproofing applications, as well protective coating to rebars and cementitious substrates. It also serves as bond coat to repair section.

BENEFITS:

- White liquid can be easily applied by brush.
- Useful as a bonding agent between old and new concrete surfaces.
- Useful as waterproofing coat.
- Excellent as a cement modifier.
- Repair mortar, modified with **TUFFCRETE S.B.R.** suitable for repairing of RCC members.

AREA OF APPLICATION:

- Repairs to RCC beams, Columns, slabs and other RCC members.
- In repair mortars / concretes.
- Waterproofing of terrace, toilets, chajja, masonry walls
- Waterproofing for mortars / concretes.

SURFACE PREPARATION:

The surface should be thoroughly cleaned and free from oil, grease and other contaminates. Remove loose materials also.

For bond coat: Mix **TUFFCRETE S.B.R.** with neat cement in 1:1.5 proportions by weight.

For repair mortar: 20 % to 30 % **TUFFCRETE S.B.R.** by cement must be pre mixed with the water being used to mix cement mortar.

For waterproofing coat: Pre wet the surface before application of **TUFFCRETE S.B.R.** Apply 2 coats of **TUFFCRETE S.B.R.** with neat cement in 1:1.5 proportion by weight With gap of 4 to 6 hours, over the cleaned surface. Cure the surface by sprinkling water for 3-4 days.

For plastering work: Premix 6 % to 10 % **TUFFCRETE S.B.R.** by weight cement with the water being used to mix the cement mortar.

For repair: Apply the bond coat over cleaned surface by brush made from **TUFFCRETE S.B.R.** and neat cement in 1:1.5 proportion by weight. When the bond coat is tacky, place the mortar. Second coat must be applied if the first coat is dried.

Prepare the repairing mortar by adding 20 % to 30 % **TUFFCRETE S.B.R.** by weight of cement. Pre wet the surface before the application of **TUFFCRETE S.B.R.** for areas are like terraces which are subjected to foot traffic, the waterproofing films must be protected by laying mortar screed.

PROPERTIES:

Colour	: White
pH	: 8-9
Specific gravity	: Approx. 1.00
Solid content	: 34 + 2 %
Pot life	: 30-45 minutes

Manufactured By :

CHITRA INSULTEC PVT. LTD.

Ahmedabad - 380009. (Gujarat)

Marketed By :

WEATHERTUFF MARKETING

202, Sarthak Complex II, Nr. Swastik Char Rasta, Navrangpura, Ahmedabad - 380009. (Gujarat) INDIA
Ph. : 079-2656 2100, Telefax : 079-2656 4777, 3299 8226, Email : insultec@vsnl.net, Website : www.weatherstuff.com

DECLAIMER : The data contained herein is based upon information which the company believed to be reliable at the time of preparation of this catalogue. No responsibility can be accepted, or any express of implied warranty given where performance of the product is affected by surface preparation, method of application or any other circumstances beyond the control of the company.